

# Office to let

## Timpuri Noi Square - Building 1

Bucharest, Sector 4, 165 splaiul Unirii



### Building information

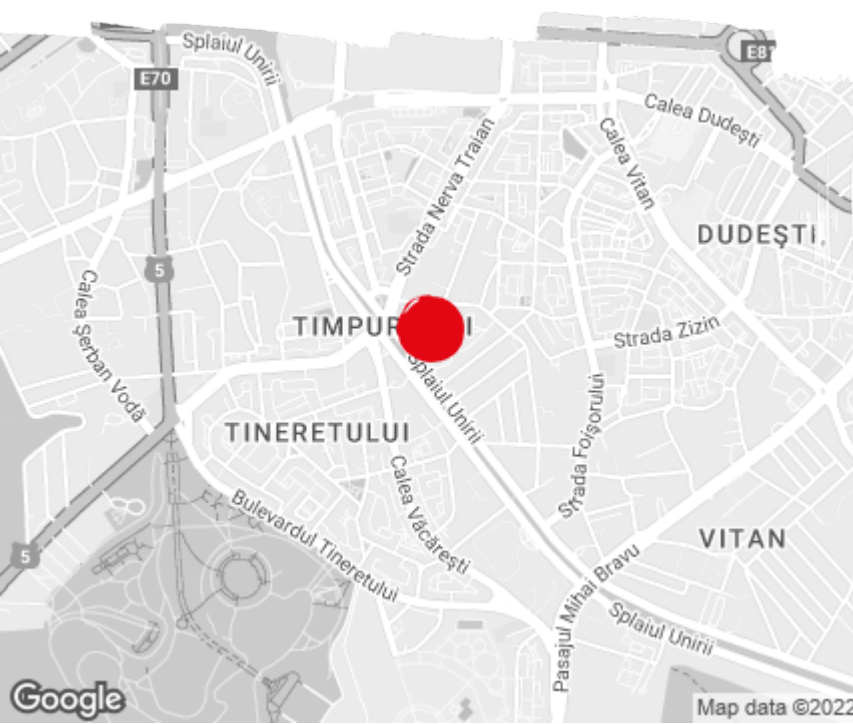
Building status	Existing
Year of construction	2017
Parking ratio	1 / 60 sq m
Total building area	13 224 sq m

### Commercial terms

Office space*	after login *
Parking	after login *
Service charge*	after login *
Minimum lease term	after login *
Availability	after login *

\* Asking terms for m<sup>2</sup>/month

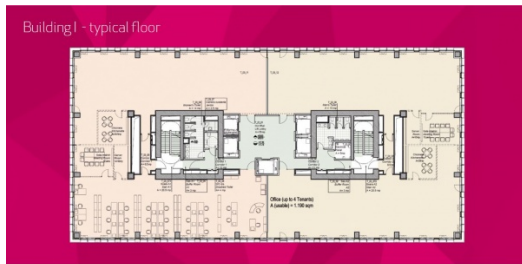
### Location



### Available space

Building completely leased

## Typical floor plan



## Public transport

Metro: M1, M3

Bus: 133, 381, 323, 312, 223, N106

Tram: 19

Contact



+40 21 302 3400

More information